



Ardleigh St. Mary's Church of England Primary School (Voluntary Controlled) Primary School



Weekly Newsletter Number 8 W/B 31.10.16



Headteacher: Ms D Parker Chair of Governors: Mr T Barrott Office Manager: Mrs K Snook Site Manager: Mr G Cole

Colchester Road, Ardleigh, Colchester, Essex. CO7 7NS. Tel: 01206 230394 Fax: 01206 231717



Using the Olympic and Paralympic Values

LOTTERY FUNDED

Harvest Service



We would like to thank everyone who attended our Harvest Festival, held at St. Mary's Church, Ardleigh, on Thursday 20th October 2016.

We hope you all enjoyed the Service and the performances by the School Choir and School Band, which are new additions this year.

We would like to extend a huge thank you to you all for your kind donations when leaving the church as we raised a fantastic total of £102!

This will be sent to Colchester Shelter to help support their work with the Homeless.

Many, many thanks.

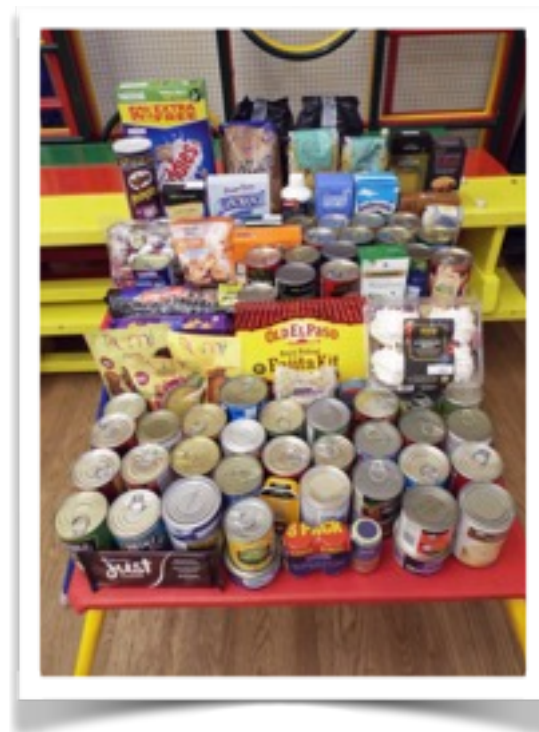
THANK YOU!

Proudly supporting
Shelter

Harvest Produce

We are extremely appreciative of the harvest produce you sent in and this will be boxed up and taken to St. Helena Hospice as a gift from our School.

Thank you!



THANK YOU!



Meals - Lunch Menu

The menu for the week beginning 07.11.16 is Menu 46 - New Menus!



Additional Letters

*Flu Vaccinations letters - need to be back by 10.11.16



Friends of News



FRIENDS OF HALLOWEEN PARTY 2016

The 'Friends of' committee want to say a massive thank you to all the children and parents that made our Halloween party last Sunday such a monster success. Over 70 children came along, and put on a seriously dazzling display of fancy dress- witches and wizards danced with mummies and monsters, whilst pumpkins and poltergeists partied with ghosts and ghouls!

There were games aplenty, including the 'dead or alive' body- which gave everyone the chance to feel their way around a mushy brain, a slimy heart, squidgy kidneys, yucky intestines and crunchy bones! There was also a very popular 'Trick or Treat' food tasting game with disgusting treats such as Maggots and Eyeballs (as well as one of Tabitha's 'nasty nappies'!!!) not to mention the dangling donuts, apple bobbing and a host of other fun filled activities.

Well done to all of the children (and Adults) on their AMAZING costumes- you all looked brilliant and it was down to poor Amanda to make the very difficult decision of judging the fancy dress and pumpkin carving competition.

Our winners were:-

Fancy Dress winners: KS1: Eliza Harmer & Camble Weaver / KS2: Jasmin Moses & Sonny Dines

Runners up: KS1: Amelie Andrews & Farris Cavalier / KS2: Olivia Harmer & Harry Rawlinson

Carved Pumpkin: Sophia Sparling, William Bohanna-Smith (Pre-Sch) & Philly Andrews (Pre-Sch) Imogen Howard-Lock, Reuben Dines and Harry Reeve

Splat the Bat: Jacob Partridge - the first person to get 3 splats!

Pumpkin Alley: Stanley Harmer with an impressive score of 190!



We will be putting some photos of the party up at school very soon, so keep your eyes peeled!

The Friends of would like to thank everybody who helped with the Halloween Party, whether it was setting up, during the evening or clearing away.

We are very lucky to have your support and we couldn't do it without your help, so a BIG thank you!

We are pleased to let you know that we managed to raise just over £100, which will be put towards the Coach for the Pantomime in December.

FRIENDS OF AGM

On a final note, the Halloween Party is just one of the events that the Friends put on during the year- all with the aim of raising funds for the fun stuff at school.

So if you liked what you saw and fancy get involved, why not pop along to our AGM on **Wednesday 9th November at 9.00** in the school hall- we promise that there will be coffee and cake!

If you don't feel able to commit to joining the committee, but would like to help out in some way, please do come along for a chat- we would love to see you!

Roman Cup - Round 1

On Thursday 3rd November 2016, we took 24 Y5 and Y6 children to the Garrison Squash Courts to take part in the first round of the Roman Cup Squash Competition.

We were able to enter 3 teams per year group and they joined teams from 5 other local schools for the afternoon to compete in the first of three rounds in this annual event.

They all played extremely well and we are currently waiting to find out how all the teams performed. The next round is on Thursday 17th November 2016.

Y5 Team 1

Rebecca Morley
Amelia Watkins
Archie Cathro
Thomas Owen

Y5 Team 2

Lucy Banks
Grace Johnson-Laird
Danny Percival
Finley Blanchette

Y6 Team 1

Oli Elden
Emily Waddell
Jamie Smith
Keaton Huffey

Y6 Team 2

Imogen Howard-Lock
Jessica Scotchmer
Matthew Salmon
Sonny Dines

Y5 Team 3

Leona Wade
Olivia Harmer
Jack Andrews
Jarvis Heath



Y6 Team 3

Jasmin Moses
Enya Parsons
James Tree
Edward Reeve

Forest School Sessions - W/B 07.11.16

Class 1 - Tuesday
Y2 - Wednesday
Y4 - Thursday
Y6 - Friday



Forthcoming Event ****Diary Date****

Online E-Safety Session for parents of Year 5 and Year 6 pupils at Manningtree High School.

Please put this date in your diary - Tuesday 15th November 2016
Information sent out 1st November 2016



Ardleigh Pre-School News

Places Available

The new term has begun and the pre-school children have now settled in after their return from the summer holidays.

It is now time for us to open places for new starters who would be welcomed to start at any time during the current term or join our waiting list for January.

We accept the **Government funding** otherwise our sessions are only £12.00 for 3 hours.

In addition to our daily 9.15am to 12.15pm sessions we also offer early drop off from 8.45am, lunch club from 12.15pm to 1pm, and full day sessions from 9.15am to 3.15pm on Mondays*, Tuesdays & Thursdays.

In conjunction with Ardleigh St Mary's Primary School the pre-school runs a very successful *transition session which would be of great benefit to any child due to start Primary School in September 2017.

If you don't believe us about the benefits then please speak to either Ms Parker or the reception class teacher for more details. (*transition session is held on Monday afternoons)

If you have a pre-school aged child, age 2-4, and are interested in finding out more about Ardleigh Pre-School please contact Jenny.

Email: admissions@ardleighpreschool.co.uk, or call 07517 430114.

Plea

If you have any unwanted dressing up items suitable for the age group 2yr to 4yr, please could you donate them to the Pre-School.

Either contact the Pre-School on the above number or drop them off at the school.

Many thanks.

School Meetings

Ardleigh Community Award Launch

The launch was held this week to introduce the children in Year 6 and their parents to the Ardleigh Community Award.

We are all looking forward to another successful year.

I am confident that the pupils will thoroughly enjoy the experiences they will encounter through the participation of this award.

Parent Teacher Interviews

We held the first of our of two Parent Teacher Interviews evening this week and we hope that the parents who attended found the discussions useful.

The second of these evenings is next week; Tuesday 8th November 2016 - 3.30pm - 6.30pm.

Eggs For Sale

We are selling eggs from our school chickens - £1 per half dozen.

All money raised is used to buy food for the chickens.

If you would like to buy any eggs, please speak to Mrs Arnold who will be selling them on Wednesday afternoons near the school gate.

Thank you.



School Uniform

Any orders for school uniform should be sent to the school office by:-

Thursday 10th November 2016.

Thank you.

Dates For Your Diary

- *07.11.16 Tiptree and Stanway Consortium KS2 Music Festival - details sent out 19.10.16
- *08.11.16 Tendring Small Schools' Cluster Enrichment Activity Programme - Drama Workshop at Mistley Norman Primary School - aimed at Y6 - details to follow
- *08.11.16 Parent Teacher Evening - 3.30pm - 6.30pm - details sent out 03.10.16
- *09.11.16 Friends of AGM - 9am - school hall
- *13.11.16 Remembrance Service at St. Mary's Church, Ardleigh - details to follow
- *15.11.16 Crucial Crew - Y6 - details to follow
- *15.11.16 Online E-Safety Workshop at Manningtree High School - details sent out 01.11.16
- *17.11.16 Y6 Height and Weight checks - details to follow
- *17.11.16 Tendring Small Schools' Cluster Enrichment Activity Programme - Art @ St. Joseph's Catholic Primary School - aimed at Y3 - details to follow
- *17.11.16 Roman Cup - Round 2 - Squash Tournament - Y5/6 - details to follow
- *18.11.16 Children in Need Day - details to follow
- *W/C 21.11.16 - Installation of new playground equipment
- *21.11.16 Ardleigh Pre-School attending Assembly - 2.20pm start
- *25.11.16 Non Uniform Day for Friends of Christmas Fete - details to follow
- *25.11.16 Tiptree and Stanway Consortium Y3/4 Football Tournament - details to follow
- *25.11.16 Harwich and District Primary Schools' Sports Association Uni-Hoc Competition @ Harwich Sports Centre - details to follow
- *30.11.16 Full Governing Body meeting
- *01.12.16 Tendring Small Schools' Cluster Enrichment Activity Programme - Music @ Ardleigh St. Mary's Primary School - aimed at Y1 - details to follow
- *01.12.16 Roman Cup - Round 3 - Squash Tournament - Y5/6 - details to follow
- *02.12.16 Friends of Christmas Fete - details to follow
- *05.12.16 Nativity Dress Rehearsal - details to follow
- *06.12.16 Nativity Performance - details to follow
- *07.12.16 Nativity Performance - details to follow
- *W/C 12.12.16 Reports to go out this week
- *12.12.16 Ardleigh Community Award Bell Ringing Workshop - Y6 - details to follow
- *13.12.16 Christingle Service - 2pm - details to follow
- *14.12.16 Christmas Lunch - details to follow
- *15.12.16 Pantomime - details to follow
- *16.12.16 Christmas Concert - 6.30pm - details to follow
- *21.12.16 Break up

Non Pupil Days

Monday 20th February 2017
Monday 5th June 2017



Handicrafts Club

The next Handicrafts Club is on Monday 21st November 2016



Chatterbooks Club

The next Chatterbooks Club is on Wednesday 9th November 2016



Football Club

The next Football Club is on Monday 7th November 2016



School Band Practice Club

The next School Band Practice Club is on Thursday 10th November 2016



Netball Club

The next Netball Club is on Tuesday 15th November 2016



Glee Bees Club

The next Glee Bees Club is on Friday 11th November 2016



Coding Club

Coding Club starts on Tuesday 15th November 2016



Maths Club

The next Maths Club is on Wednesday 9th November 2016

This is for Group A



Tag Rugby Club

The next Tag Rugby Club is on Friday 11th November 2016



Please don't forget, if you have any issues or queries you want to discuss with any member of Staff please come in and speak to us.



Have a lovely Weekend.
Take care - From all at Ardleigh St. Mary's

